

# Word of the Day

## Spring Term 2026

Week 21 – 9th February 2026



*'Words unlock the doors to a world of understanding...'*

# This Week's Words

## Grasshopper

**cheap**

**rough**

**smooth**

**gloomy**

**wake**

## Shinobi

**cause**

**harsh**

**flock**

**explanation**

**abolish**



**VOCABULARY NINJA**

# Grasshopper (Tier 1)

**cheap**

**rough**

**smooth**

**gloomy**

**wake**



**VOCABULARY NINJA**

# Shinobi (Tier 2)

**cause**

**harsh**

**flock**

**explanation**

**abolish**



**VOCABULARY NINJA**



# Grasshopper Word of the Day

Word of the Day:

Pronunciation / Syllables

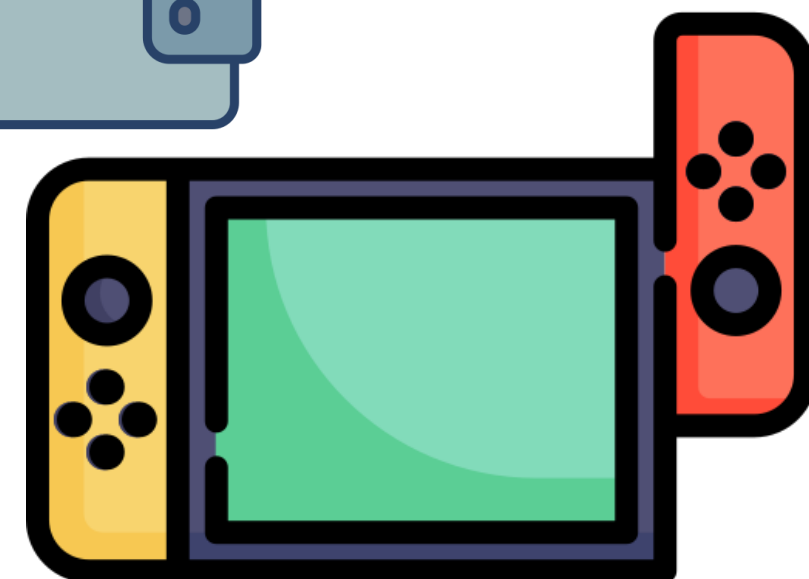
cheap  
(cheap)

Word Class  
(adjective)



Definition:

Goods or services that are cheap cost less money than usual or than you expected, sometimes because over lower quality.



The games consoles were not **cheap** to buy.

Synonym:

budget  
reduced

Antonym:

expensive  
dear

Prefix / Suffix:

-er  
-est

Rhyme:

sleep  
sweep

Link Word:

incredibly  
shot



# Grasshopper Word of the Day

Word of the Day:

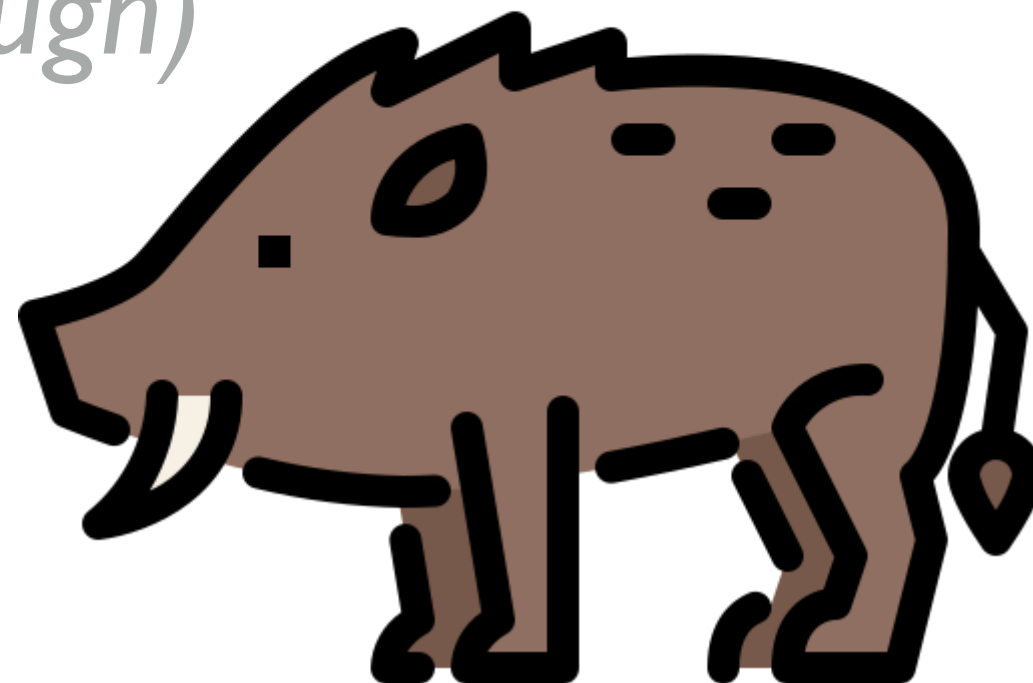
Pronunciation / Syllables

rough  
(rough)

Word Class  
(adjective)

Definition:

If a surface is rough, it is uneven and not smooth.



The fur on the animal was **rough** to touch.

Synonym:

bumpy

rocky

Antonym:

smooth

soft

Prefix / Suffix:

-ly

-ness

Rhyme:

tough

stuff

Link Word:

somewhat

relatively



# Grasshopper Word of the Day

Word of the Day:

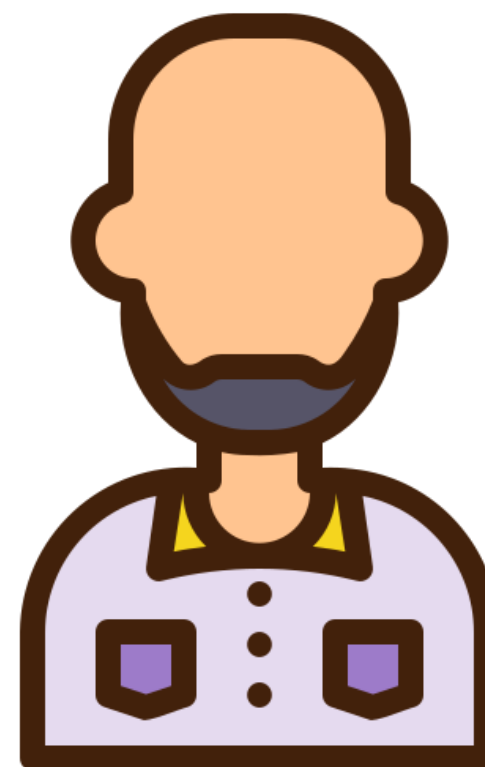
**smooth**  
(*smooth*)

Word Class  
(adjective)

Pronunciation / Syllables

Definition:

A smooth surface has no roughness, lumps, or holes.



Dad's head was **smooth** after shaving his hair for charity.

Synonym:

even

level

Antonym:

uneven

rough

Prefix / Suffix:

un-

-ly

Rhyme:

soothe

Link Word:

surface

flawlessly



# Grasshopper Word of the Day

Word of the Day:

Pronunciation / Syllables

**gloomy**  
(gloom-y)

Word Class  
(adjective)

Definition:

If a place is gloomy, it is almost dark so that you cannot see very well.



The graveyard in the story was **gloomy**.

Synonym:

dark

dim

Antonym:

bright

sunny

Prefix / Suffix:

Rhyme:

roomy

doomy

Link Word:

weather

utterly





# Grasshopper Word of the Day

Word of the Day:

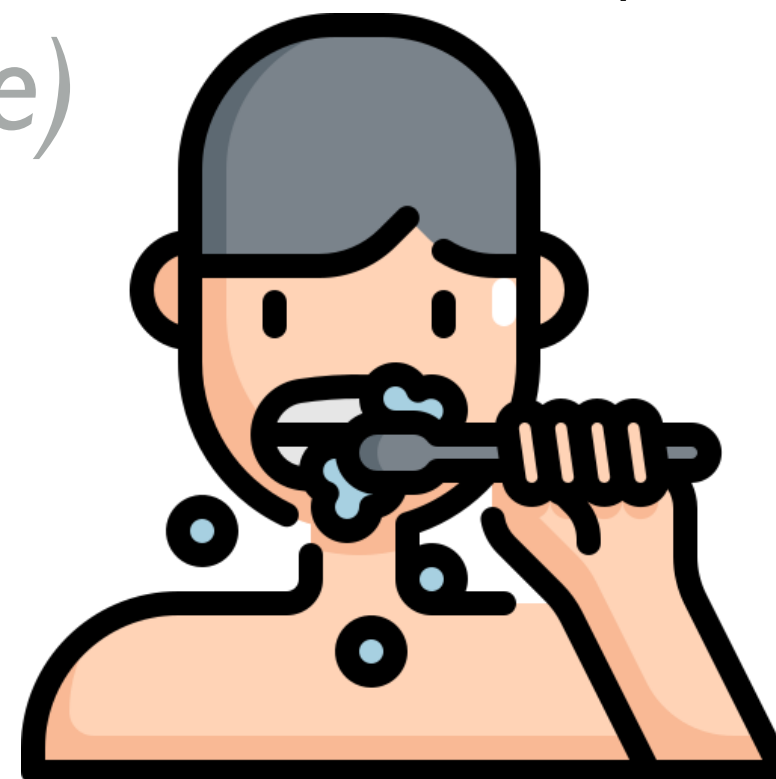
Pronunciation / Syllables

wake  
(wake)

Word Class  
(verb)

Definition:

When you wake or when someone or something wakes you, you become conscious again after being asleep.



Every morning, I **wake** up and brush my teeth.

Synonym:

stir

rouse

Antonym:

sleep

soothe

Prefix / Suffix:

a-

-ned

Rhyme:

shake

bake

Link Word:

suddenly

gently



# Shinobi Word of the Day

Word of the Day:

Pronunciation / Syllables

cause  
(*cause*)

Word Class  
(verb)

Definition:

To cause something, usually something bad, means to make it happen.



The **cause** of the accident was driving too fast.

Synonym:

create

initiate

Antonym:

quash

abolish

Prefix / Suffix:

-ed

-s

Rhyme:

ward

pause

Link Word:

likely

common



# Shinobi Word of the Day

Word of the Day:

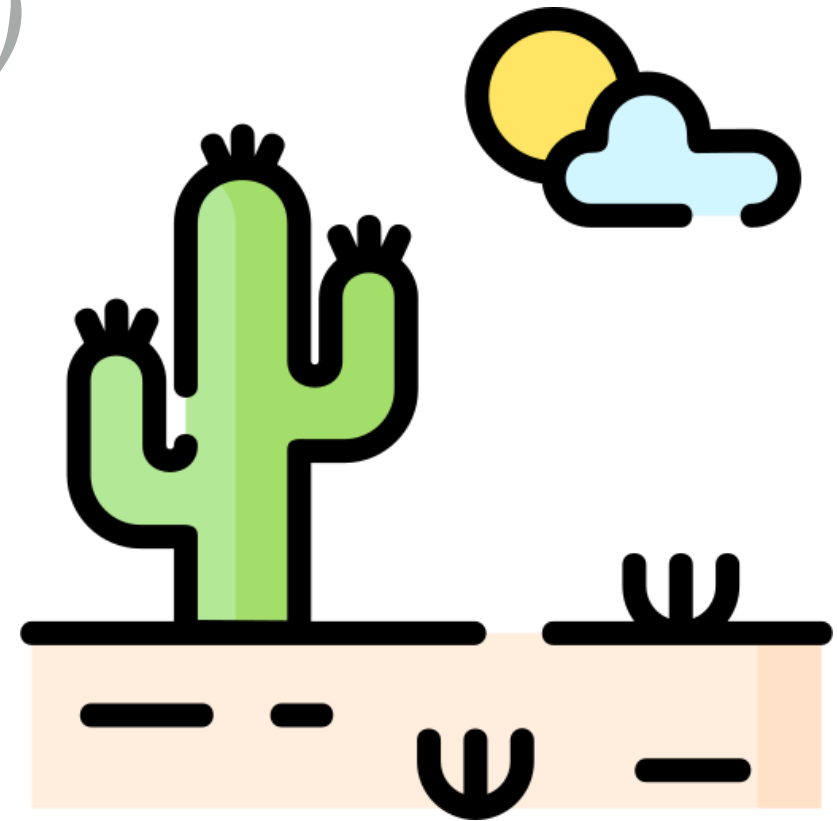
harsh  
(*harsh*)

Word Class  
(adjective)

Pronunciation / Syllables

Definition:

Harsh actions or speech are unkind and show no understanding or sympathy, often seen as unkind.



The **harsh** conditions made it hard for plants to grow.

Synonym:

cruel

brutal

Antonym:

kind

nurturing

Prefix / Suffix:

-ly

-ness

Rhyme:

marsh

Link Word:

act

unpleasantly



# Shinobi Word of the Day

Word of the Day:

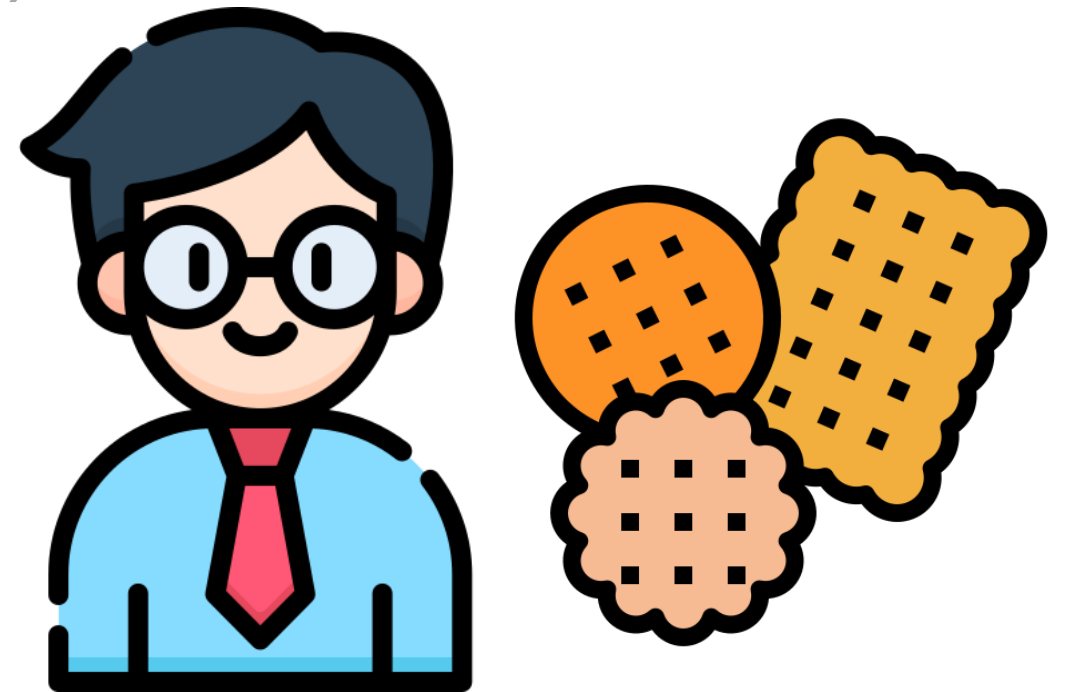
Pronunciation / Syllables

**flock**  
(flock)

Word Class  
(noun / verb)

## Definition:

You can refer to a group of people or things as a flock of them to emphasize that there are a lot of them.



The **flock** of teachers gathered around the biscuits.

Synonym:

group

horde

Antonym:

individual

singular

Prefix / Suffix:

-ed

-s

Rhyme:

stock

block

Link Word:

closely

steadily



# Shinobi Word of the Day

Word of the Day:

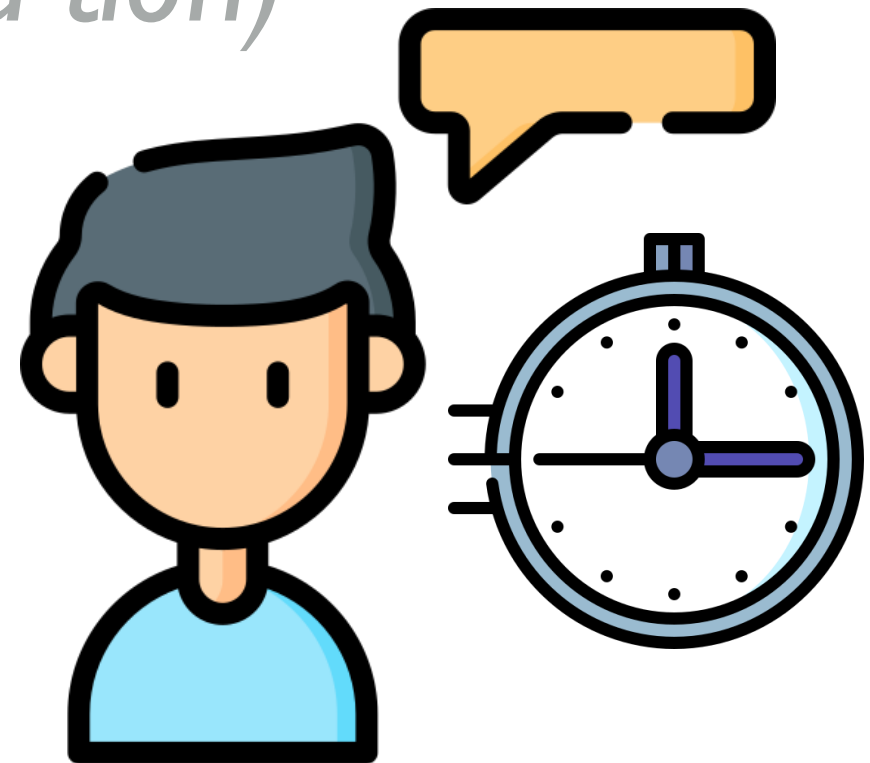
**explanation**  
(ex-pla-na-tion)

Word Class  
(noun)

Pronunciation / Syllables

## Definition:

If you give an explanation of something, you give details about it or describe it so that it can be understood.



Jeremy gave a poor **explanation** for why he was late.

Synonym:

reason

version

Antonym:

Prefix / Suffix:

-s

Rhyme:

information

education

Link Word:

thorough

weak



# Shinobi Word of the Day

Word of the Day:

Pronunciation / Syllables

**abolish**  
(a-bol-ish)

Word Class  
(verb)

**Definition:**

To do away with (laws, regulations, customs, etc); put an end to.



The teacher **abolished** running on the playground.

**Synonym:**

terminate

eradicate

**Antonym:**

retain

create

**Prefix / Suffix**

-ment

-ed

**Rhyme:**

polish

demolish

**Link Word:**

altogether

formally

# Vocabulary Laboratory



Describe / Definition:

Use it in a sentence:

**Focus Word** (write below):

**Word Class:**

**Synonyms:**

(words with same / similar meaning)

**Antonyms:**

(words with opposite meaning)

**Draw your sentence:**

**Rhymes:**

(words that sound the same)

**Link Words:**

(Example: football = pitch, team, player)

# Vocabulary Visualiser

Draw the  
**Grasshopper** words  
and bring them to life.



Word: cheap

Word: rough

Word: smooth

Word: wake





# Vocabulary Visualiser

Draw the **Shinobi**  
words and bring  
them to life.



Word: harsh

Word: flock

Word: cause

Word: abolish



# Matching Meanings

Draw lines from the **Grasshopper** words to their definitions.



## Grasshopper Word

cheap

rough

smooth

gloomy

wake

## Grasshopper Definitions

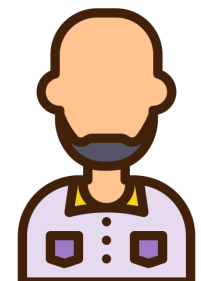
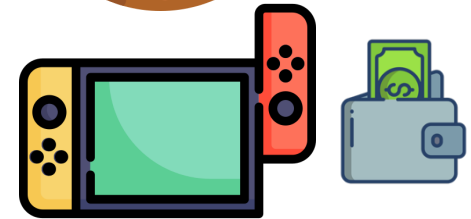
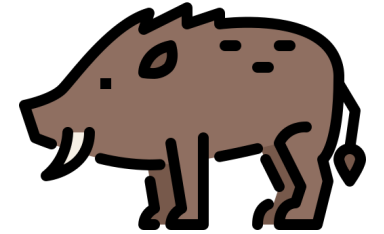
If a surface is \*\*\*, it is uneven and not smooth.

If a place is \*\*\*, it is almost dark so that you cannot see very well.

Goods or services that are \*\*\* cost less money than usual or than you expected, sometimes because over lower quality.

When you \*\*\* or when someone or something wakes you, you become conscious again after being asleep.

A \*\*\* surface has no roughness, lumps, or holes.



# Matching Meanings

Draw lines from the **Shinobi** words to their definitions.



## Shinobi Word

## Shinobi Definitions

cause

\*\*\* actions or speech are unkind and show no understanding or sympathy, often seen as unkind.



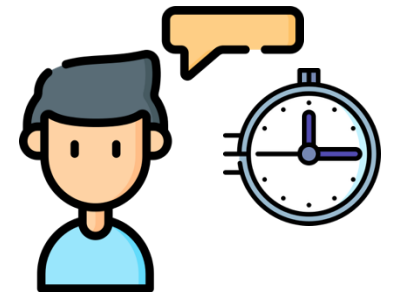
harsh

To \*\*\* something, usually something bad, means to make it happen.



flock

If you give an \*\*\* of something, you give details about it or describe it so that it can be understood.



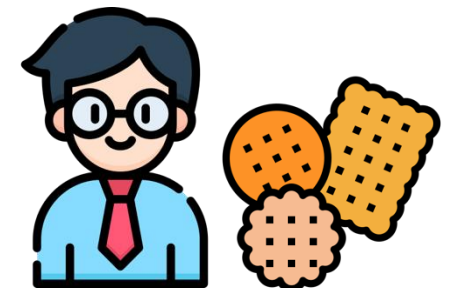
explanation

To do away with (laws, regulations, customs, etc); put an end to.



abolish

You can refer to a group of people or things as a \*\*\* of them to emphasize that there are a lot of them.





# Display Slips

The following slides are for classroom display. As you teach each Word of the Day, words can be displayed in the classroom to enable pupils to use the taught vocabulary in an independent manner.




worried



opini

asure

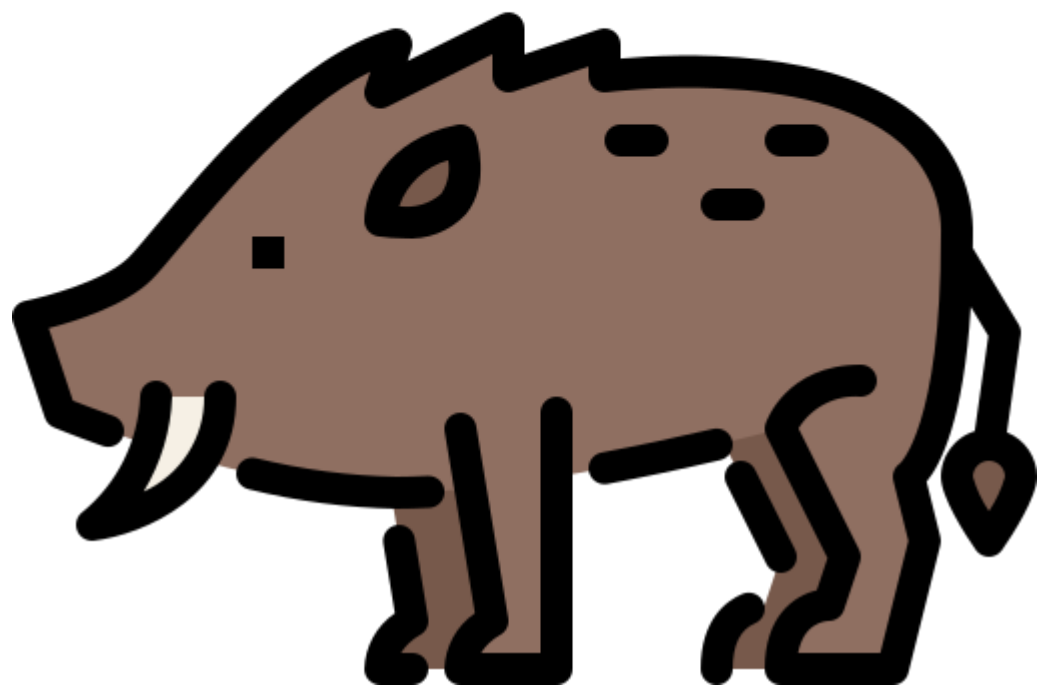


di





# cheap

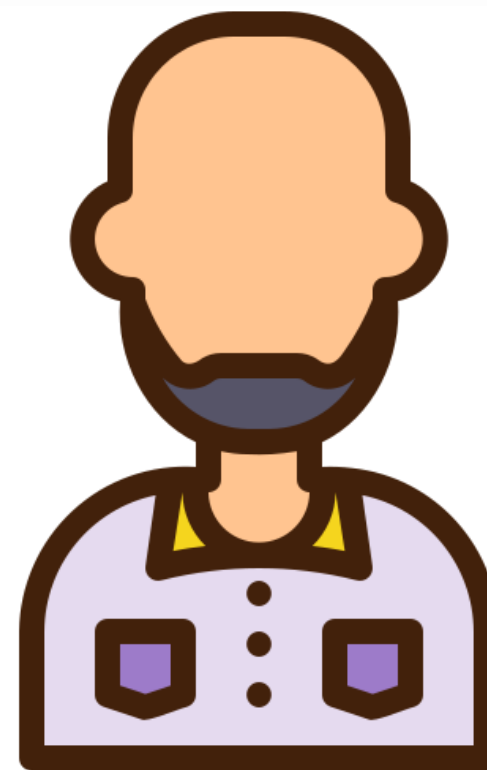


# rough





# smooth

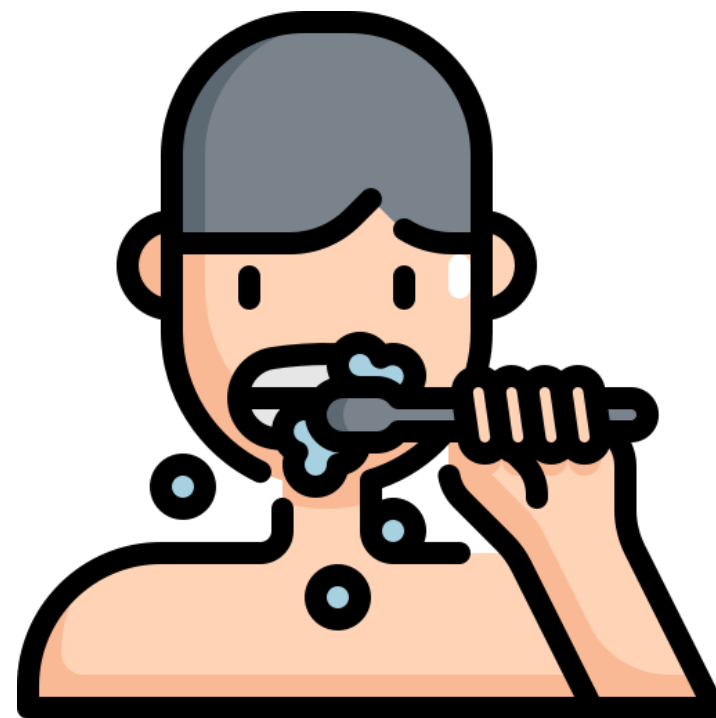


# gloomy





# wake

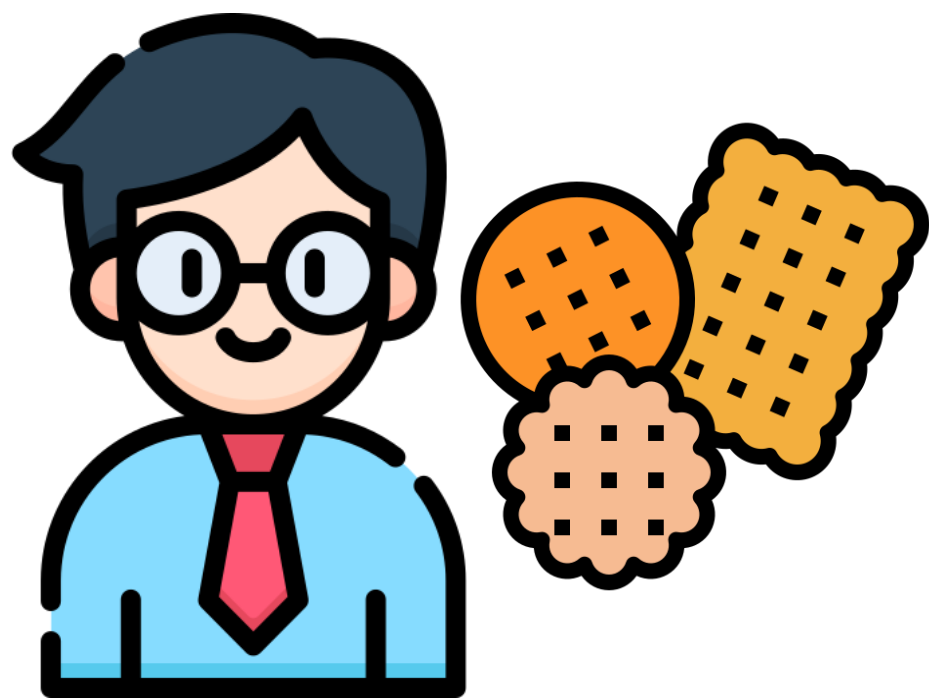
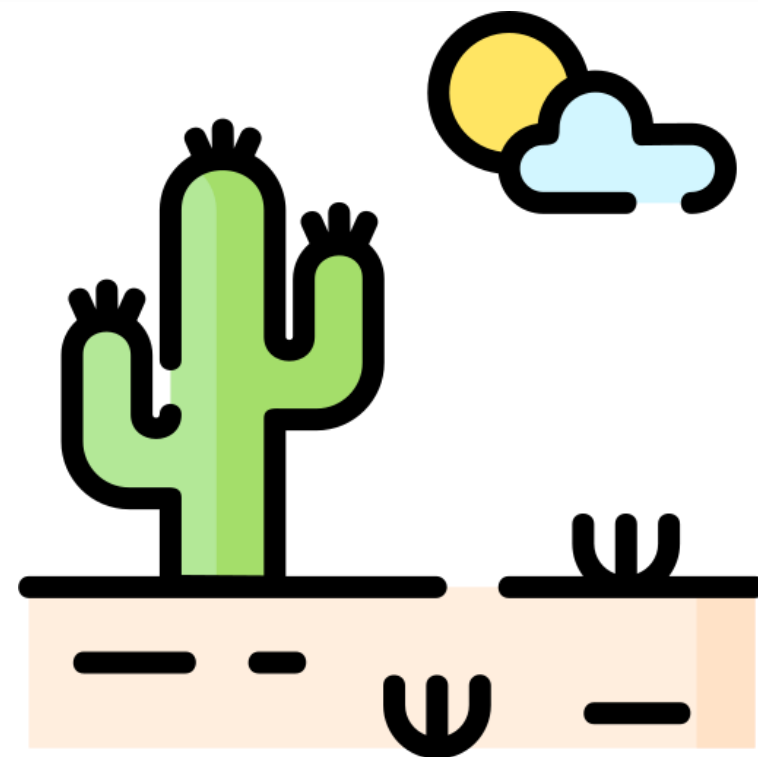


# cause





# harsh



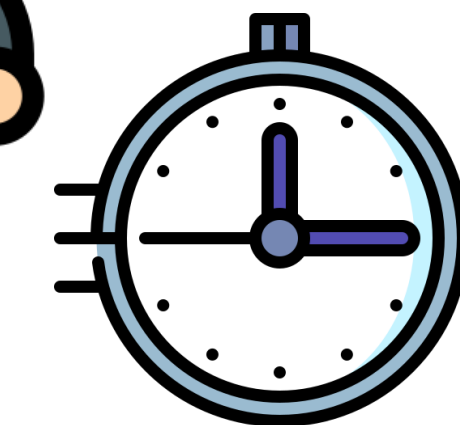
# flock







# explanation



# abolish

